



Alpha Epsilon Delta

The Pennsylvania State University

GBM #3

Monday, February 23



Alpha Epsilon Delta

The Pennsylvania State University

Attendance:



Teams:

Code: 6dwzzwj



**GBM
#3**

Monday, February 23



**B.S. in Behavioral
Science (Minors in
Social Work and
Healthcare
Management) | Saint
Francis University**

Natasha Smith

Hotline & 988 Program Manager at Centre Helps
Email: natashas@centrehelps.org

Membership

Membership Status

AED Email:

psuaedsecretary@gmail.com

For any questions regarding membership status, please reach out to Sophia! 😊

Website: aedpsu.com

Insta: [@aedpsu](https://www.instagram.com/aedpsu)

The screenshot shows the Alpha Epsilon Delta website with a navigation menu. The 'Member Resources' link is highlighted with a red box. A dropdown menu is open, showing 'Membership Status' circled in red. Below the navigation, the 'Membership Points 2025' spreadsheet is displayed. The spreadsheet has columns for Name, PSU EMAIL, and Meetings (Meeting 1 through Meeting 5). The data is as follows:

Name	PSU EMAIL	Meeting 1	Meeting 2	Meeting 3	Meeting 4	Meeting 5	Meel
Kevin Tian	km6125@psu.edu						
Jame Mooney	jm8098@psu.edu						
Sophia Meica	sam7831@psu.edu						
Charvi Patel	cdp6456@psu.edu						
Jason Norwick	jn5550@psu.edu						
Reese Petrosky	Rbp5438@psu.edu						
Bailey McLaughlin	bam6508@psu.edu						
Morgan Kelley	muk9305@psu.edu						
Laura Cooney	lmc6418@psu.edu						

Office Hours

AED Office: HUB 207

If the door is closed, message Exec to be let in!

Kevin Tian (President): Mondays | 10-11 AM

Sarah Vinson (Treasurer): Wednesdays | 9-10 AM

Use stairs/elevators by Sbarro to Floor 2 & follow signs to HUB 207!

26-27 Executive Director Interest Form



[LINK](#)

Anonymous AED Feedback



[LINK](#)

Appendix Section

Check out additional resources, opportunities, and more in our **“Appendix”** section at the end of this PowerPoint!

Service

PSCOMxYMCA: Fighting Food Insecurity

Long-Term Service Opportunity

- **D&T:** Tuesdays | 7:30-10 PM
- **Location:** Rear Wagner Bldg. (CrossFit)
- **Details:** AED, PSCOM, the YMCA Anti-Hunger Program, and others are partnering to address **local food insecurity!**

2 Service Points | Send proof of attendance to **Jamie Mooney** (jlm8089@psu.edu).



[SignUp Genius](#)

Jared Box Donations

Help infants through
tweens navigate tough
hospital visits through
fun activities!

Drop off donations at
GBMs or at the AED
Office (HUB 207)

**1 Service Point Per
Donation**

Donation Ideas

- Small toys
- Light-up toys
- Small books
- Stuffed animals
- Coloring books
- Crayons
- Activity books
- Silly putty
- Card games
- Crafts



Jared Box Packing | Wednesday, Feb. 25

Date: Wed., Feb. 25
Time: 5-6 PM
Location: Boucke 214

1 Service Point



[Interest Form](#)



Healthworks Peer Educator

HealthWorks: Student peer education and outreach program that promotes health at University Park

- **3-Credit BBH Course:** Peer Educator Training
 - Students are hired for a paid on-campus job in the following semesters
- **Activities:** Conduct wellness services for students, present educational workshops, and staff outreach tables and events
- **Why Join:** Great opportunity for freshmen and sophomores to get involved, build resumes, and gain leadership and public speaking skills

1 Service Point Per Hour

Our events and programs are open to all students regardless of race, gender, sexual orientation, race, or any other protected class. Student Affairs is committed to building a community of belonging for all.

PASSIONATE ABOUT Health & Wellness?

Apply to become a healthworks Peer Educator!



Apply now!

- Conduct educational workshops
- Provide one-on-one wellness services
- Empower students
- Build leadership skills
- Academic credit and paid opportunities

For more information, scan the QR code



or visit bit.ly/HealthWorksPSU

PennState Student Affairs | Health Promotion & Wellness

This publication is available for alternative media on request. Penn State is an equal opportunity employer and committed to promoting employment opportunities for a full and diverse workforce with and without disabilities. We are committed to providing a reasonable accommodation for any individual with a disability. For more information, contact the University's Office of Disability Services at 814.863.7243.

PAW Pals: Service & Outreach | April 2026

Long-Term Service Opportunity

- **Details:** Conduct science demonstrations and discussions for local elementary students
 - Ran by **PAW+: Physics & Astronomy for Women+**
- **Interested:** Reach out to Penelope Hudock at pwh5216@psu.edu !

1 Service Point Per Hour

PAW PALS IS BACK!!
AND we're looking for new volunteers!!!



- At least one hour of community service per month!
- Transportation is provided!
- Flexible service shifts based on your availability!
 - An opportunity to give back to your community and teach the next generation of scientists!



If interested or want to get more information, scan the QR code attached or send us a message!

LionCare 2026 Update

Thank you to everyone who applied!

All volunteers have been chosen, and February volunteers have been contacted. Remaining volunteers and applicants will be contacted by the end of this week.

If you did not get chosen, don't be discouraged! Feel free to apply again next semester, and please reach out to Kevin (kmt6125@psu.edu) with any questions.

LionCare Info Session | Thursday, Feb. 26

LionCare Info Session

Date: Thursday, February 26

Time: 2-6 PM

Location: Thomas 122

Details: Overview of day, review of scribing, and answer questions!

- Attendance is NOT mandatory to volunteer with LionCare, but we highly encourage you to attend if you have an interest in volunteering
- Led by AED's Community Health Liaisons: Stephanie Carson and Isha Javiya

1 Activity Point

Professional Development

UPenn MD/PhD Info Session | Feb. 25

University of Pennsylvania MD-PhD Info Session

Date: Wednesday, Feb. 25th

Time: 4:00 to 5:15 PM

Details: The session will be hosted by Dr. Skip Brass and a panel of current MSTP students from UPenn. They will discuss UPenn's MSTP program, but this is a general info session in which you can ask anything - including why they should become a physician-scientist.

RSVP Here: [LINK](#)

1 Activity Point



Research: BMB 496 App. | Due March 2

Independent Research in BMB

Application Process:

1. Review the policy → [LINK](#)
2. Click on the [LINK](#) for the online application.
3. Review the list faculty and criteria
4. Submit the online application by **Monday, March 2, 2026.**

If the faculty member is interested, then you will be contacted for an interview. **Interviews should be held between March 16 and March 27, 2026.**

Reach out to Lindsey Sampsell (lks165@psu.edu) with questions!



[More Info Here](#)

Research: SURF App. | Due March 18

BMB Summer Undergraduate Research Fellowships

Overview

- Must be a BMB, MICRB, or BIOTC major
 - Faculty Mentors must be in the BMB Department or a member of BMMB Graduate Faculty
- Can earn scholarship funds (\$4000) for unpaid research experiences in a BMB 488 or 496 faculty lab.

Application Process

1. Submit application and research proposal statement online [HERE](#)
 - a. Faculty Mentor must also email a Letter of Support to Lindsey Sampsell
2. Everything **MUST** be submitted by **5 PM on Wednesday, March 18**
 - a. Students will be notified by April 10th

Please reach out to Lindsey Sampsell (lks165@psu.edu) with questions!



[More Info Here](#)

One Health Certificate Program (13 Credits)

One Health: Human-Animal Interface Certificate Program

13 Credits Requirement

- VBSC 340N: Intro to One Health
- VBSC 444: Epidemiology of Infectious Diseases
- VBSC 341: Wicked Problems in One Health
 - Solve problems with students from other majors!
- 2 electives

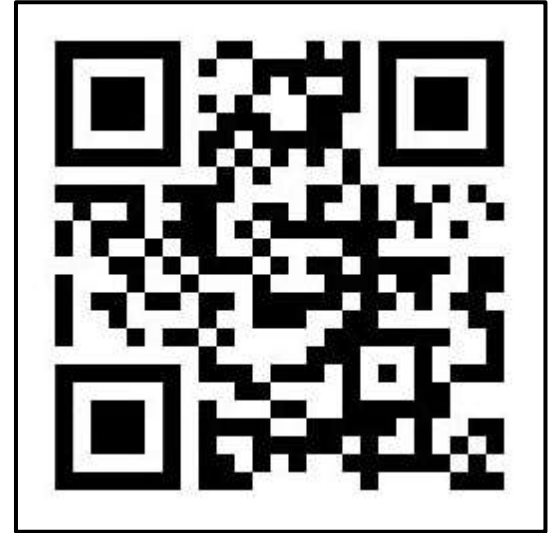
Open to all majors.

Contact Dr. Jennifer Koehl (jzk335@psu.edu) with any questions!

Draw Medicine Summer Fellowships

Overview

- **Format:** 10-week, remote, mainly asynchronous
 - Starts in June
- **Learn:** How to verbally and visually communicate pathologies and operations
- **Why Apply**
 - Learn medicine and gain exposure to multiple specialties
 - Practical, standout skill to use in research, clinics, and interviews
 - Connect with other motivated pre-meds
- **Application**
 - [Pre-Med](#) | [Pre-PA](#) | [Pre-Nursing](#)



Contact Dr. Rebecca Kellner
(rebecca@drawmedicine.com) with
any questions.

Draw Medicine [Website](#) &
[Instagram](#)

VAW Global Team Leadership Fellowship

Overview

- **Details**
 - 8-10 month hybrid fellowship
 - Around 3-5 hours per week
 - For anyone interested in gaining skills in public health and global healthcare systems
- **Why Apply**
 - Learn about healthcare in a global context
 - Gain effective leadership and communication skills
 - Acquire international and public health work experience
 - Attend several orientations and workshops focused on personal development and cultural sensitivity
- **Application**
 - **Register for an Info Session:** [LINK](#)
 - **Registration Code:** Care4ALL
 - **Due:** May



Info Session: [LINK](#)
[VAW Global Site](#)

AED General Merch

Thank you to everyone who ordered merch!

Reach out to me on either GroupMe or Teams if you're unsure if you placed an order and I can check for you.

Merch will also be distributed during **Office Hours (HUB 207)** as well as the next GBM this semester. If these times don't work for you, reach out to **Sarah Vinson (Treasurer)** on GroupMe or via email:

srv5241@psu.edu

A few extras were ordered, so let me know if you are still interested, and we can work out the logistics!

THON™

THON 2026 Total

We raised \$13,092.92 for THON Weekend 2026!!!

Thank you all so much for showing up and participating. We will have more fun activities throughout the semester, but thank you all so much for a successful THON year!

Social Activities

AED x Schreyer StuCo Spring Formal

Overview

Date: Friday, April 10

Time: 6:30-8:30 PM

Location: The Basement Nightspot

Tickets

- **\$15** per ticket
- Sales will begin after Spring Break in **Atherton Hall**

Details

- Open to everyone! Bring your friends.
- Will have food, DJ, and photo area

Reach out to Jason (jin5550@psu.edu) with questions!

2 Social Points



Spring IM Sports Interest Form

Upcoming IM Sports

- Kickball
- Volleyball
- Outdoor Soccer

Season Start: After Spring Break
Interest Form: [LINK](#)

2 Social Points



Diversity in Healthcare Task Force (DHT)

Diversity in Healthcare Conference

Registration Open

Date: Sunday, March 1

Time: 11-5pm

Location: Heritage Hall (HUB)



[DHT Conference Website](#)

More Info:

DIVERSITY IN HEALTHCARE CONFERENCE

PREVENTATIVE CARE

Earn a Certificate from PennState College of Medicine

MARCH 1ST, 2026 11AM - 5PM HERITAGE HALL

CONNECTION TO CARE
MANAGING ILLNESS
HEALTH EDUCATION

DISCUSSION
CONFERENCE
SOLUTION
IMPLEMENTATION

Our mission is to address healthcare disparities, champion equity, and inspire actionable solutions that create lasting change in communities.

@DHTCONFERENCE!

Thank You!



Alpha Epsilon Delta

The Pennsylvania State University

Teams:

Code: 6dwzzwj



GroupMe:



**GBM
#4**

Monday, March 16

Appendix

25-26 Leadership

25-26 Executive Board



President
Kevin Tian
kmt6125@psu.edu



Vice President
Jamie Mooney
jlm8089@psu.edu



Secretary
Sophia Meola
psuaedsecretary@gmail.com



Treasurer
Sarah Vinson
srv5241@psu.edu



Public Relations
Jason Norwicke
jjn5550@psu.edu



THON Primary Chair
Justin Deekollu
jjd6465@psu.edu



DHT Director
Eliana Garza
egg5192@psu.edu

Spring 2026 Sub-Chairs

President | Kevin Tian

Programming

Devika Bhavsar

Tulsi Patel

Emma Tesler

VP | Jamie Mooney

Speakers

Alyssa Ching

Service

Ashly Peltroche

Nevaeh Sickles

Trace Livelsberger

Secretary | Sophia Meola

Editor

Angelina Sacchetti

Treasurer | Sarah Vinson

Scholarship

Levi Wilfong

Discussion | Dara l'Anson

DHT Discussion Leader

Rufaida Rahman

Danae Wafula

PR | Jason Norwicke

Social Media

Akene Moutchia

Social Events

Jimmy Gurgone

Alumni Engagement

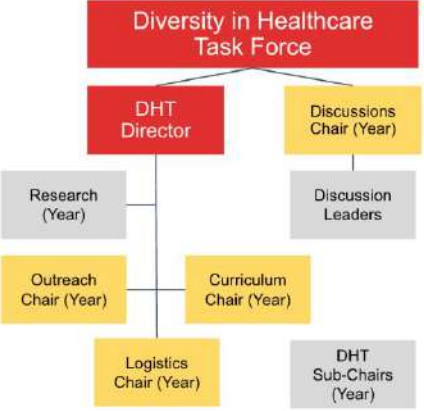
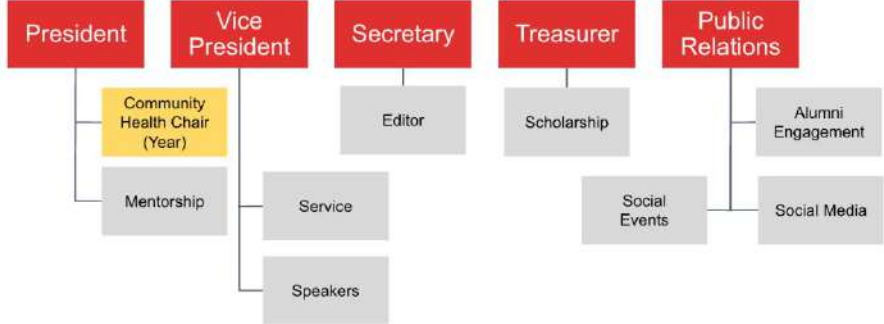
Louise Olszewski

**Thank you to everyone
who applied!**

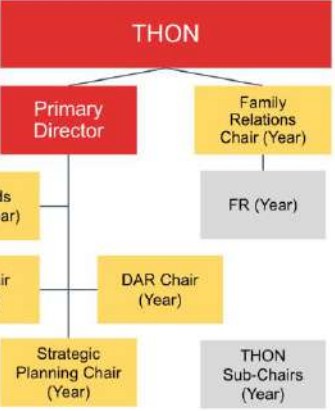
Executive Board Positions

25-26 AED Leadership Structure

Faculty Advisor:
Dr. Krajcovic



Election	Application	
Executive Director	Executive Chair	Sub-Chair



Executive Board Requirements | Spring 2026

Eligibility Requirements

1. **Undergraduate Education:** Must have completed at least 3 semesters of undergraduate education
2. **Distinguished Membership:** Must have received at least 2 semesters of Distinguished Membership
3. **National Induction:** Must be nationally inducted or on track for national induction

Additional Requirements

4. Must attend info session/meet with a current executive member
5. Must deliver a 1-3 minute election speech

Flexible within reason. Email Kevin (kmt612@psu.edu) with questions!

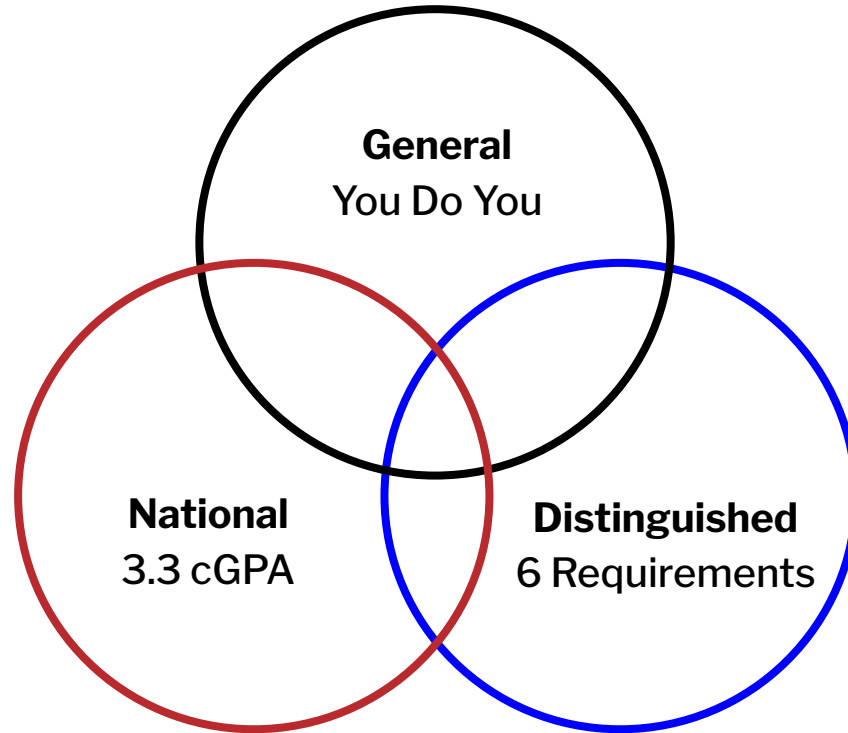
Membership

National and Distinguished Membership

National

Benefits

- Be inducted into national chapter
- Submit application in the Spring
- Provided with graduation cords
- Eligible for scholarships up to \$10,000



PSU

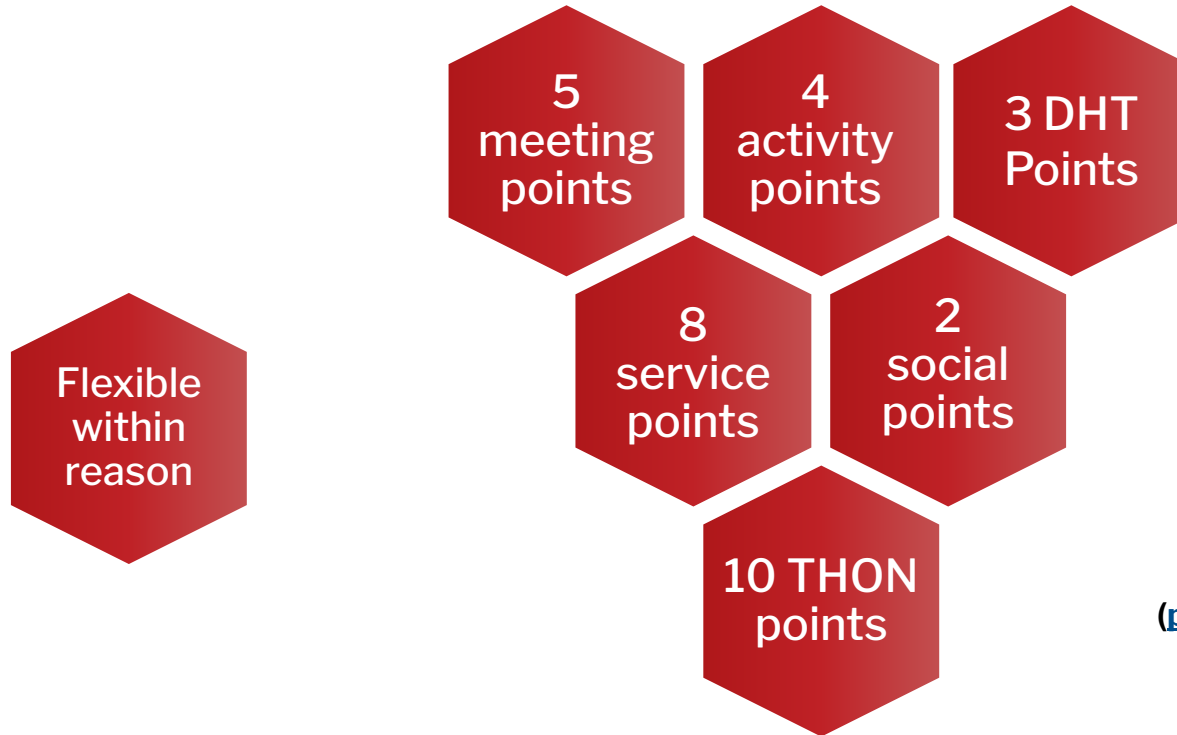
General Membership

- Highly flexible
- Utilize any resources shared

Distinguished

- Requires greater involvement
- Demonstrates commitment and leadership
- Eligible for incentives

Distinguished Membership Requirements



Email Sophia Meola
(psuaedsecretary@gmail.com)
with any questions!

AED Communications

AED ListServ

→ **For:** GBM recaps, external resources, etc.

***Teams → Most Important**

→ **For:** GBM reminders, workshop announcements, service opportunities, member resources, etc.

GroupMe

→ **For:** GBM reminders, informal questions, member conversations, etc.

Long-Term Service Opportunities

- **Abba Java Coffeehouse: [Website](#)**
 - Contact Reverend Sarah Voigt (svoigt.wesley@gmail.com)
- **Centre LGBT+: [Apply Here](#)**
 - Assist with various educational, advocacy, and community-building events
- **Centre Safe: [Apply Here](#)**
 - Serve as a Counselor/Advocate
 - 12-week training program
 - In-person or Remote Work
 - More Opportunities: furrutiasmith@CentreSafe.org
- **Centre Helps: [Apply Here](#)**
 - Serve as a Hotline Counselor Volunteer
 - 7-week training program



[Long-Term Service Opps Sheet](#)

Resources

AED Resources Folder

- Long-Term Volunteer Opportunities
- Volunteer Hours Tracker
- Preceptorship Sample Email
- THON Information
- THON DonorDrive 101
- More to be added!



Pre-Health Funding Support

Apply for Pre-Health Funding

Pre-Health has helped cover:

- MCAT, DAT, or GRE Prep
- MCAT, DAT, or GRE Registration Fees
- Primary Application Fees
- Secondary Application Fees
- Transcript Fees
- Interview Travel
- Interview Attire

Details

- Use by July 31, 2026
- Receive up to \$500
- Check **Eligibility Requirements!**



[LINK](#)

BIOL and First-Gen Scholarships

Scholarships and Research Grants for Biology Majors



Scholarships for First Generation Students



A lot of deadlines are towards the beginning of 2026!

ECoS Undergraduate Travel Awards

Eberly College of Science Undergraduate Travel Awards

If you need assistance covering travel costs for research presentations at a regional, national, or international conferences, then fill out the form!

This is a great opportunity if you are currently working in a research lab on campus and plan on attending a conference!

Travel must be completed by June 30th, 2026.



[LINK](#)

Spring 2026 Financial Literacy Webinars

Free webinars offered every other
Tuesday at 12 PM on Zoom!

Participants can join live from any device or
view past recordings on the [Financial and
Life Skills Center's YouTube](#).

Check out [Sokolov-Miller Family Financial
and Life Skills Center](#) for more information.

Questions? finlit@psu.edu



PennState Student Affairs Sokolov-Miller Family Financial and Life Skills Center

2026 SPRING WEBINARS

CONSIDERING HOME OWNERSHIP
JANUARY 6
Explore the real costs, responsibilities, and financing options of buying a home so you can decide whether homeownership is the right step for you.

ALL ABOUT TAXES
JANUARY 20
Learn the essentials of how taxes work, what forms you'll need, and what updates to expect this year so you can file with confidence and less stress.

BUILDING A BETTER BUDGET
FEBRUARY 3
Discover how to build a realistic, sustainable budget that fits your lifestyle and helps you stay on track with your financial goals.

SAVING AND INVESTING
FEBRUARY 17
Gain a clear understanding of saving, investing, risk, and long-term planning so you can make choices that help your money grow over time.

FINANCIAL DECLUTTERING
MARCH 3
Identify sources of financial clutter and learn simple ways to streamline accounts, documents, and spending systems to reduce stress and stay organized.

STUDENT LOANS
MARCH 17
Get a full overview of borrowing, repayment, loan types, and forgiveness programs to navigate the student loan process with clarity.

MONEY AND RELATIONSHIPS
MARCH 31
Examine how different money personalities influence communication and learn strategies for managing shared finances with partners, friends, or family.

AFTER GRADUATION
APRIL 14
Prepare for life after Penn State by learning key financial skills like budgeting, negotiating a starting salary, and planning for future goals.

ENVIRONMENTAL STEWARDSHIP
APRIL 28
Explore how your financial choices impact the environment and discover simple ways to save money while supporting sustainability.

CREDIT SCORES AND REPORTS
MAY 12
Understand what affects your credit score, how to read your credit report, and steps you can take to strengthen your financial reputation.

 **REGISTER NOW • OPEN TO ALL**
Visit financialliteracy.psu.edu to find events and register. All workshops are held at noon.



This publication is available in alternative media on request.
Penn State is an equal opportunity employer and is committed to providing employment opportunities to all qualified applicants without regard to race, color, religion, age, sex, sexual orientation, gender identity, national origin, disability or protected veteran status. Penn State encourages qualified persons with disabilities to participate in its programs and activities. USD: 03-23-2024

Service

Big Brothers Big Sisters

Zack Maser

(he/him)

Big Brothers Big Sisters Case Manager

Contact:

zmaser@ccysb.com

814-699-1890



OUR PROGRAMS

COMMUNITY

- 12-month minimum commitment
- Big & Little enjoy free/low-cost activities in the community
- Volunteer must have valid driver's license and access to a reliable insured vehicle

BOTH

- Include thoughtfully matched volunteers (Bigs) with children/youth (Littles).
- Are supported by a professionally trained staff member AKA a Case Manager
- Necessitate a completed application, an interview, reference checks, and clearances
- Require a desire to build a relationship with a youth in need

SITE

- One school year minimum commitment
- Big & Little meet at a site, often a local school
- Matches are supported by an on-site BBBS staff member
- Volunteer has little interaction with his/her/their Little's parent(s)/guardian(s)

Conversations to Remember: Virtual Opp.

Details: [Conversations to Remember](#) is a nonprofit dedicated towards combating loneliness and isolation felt by senior citizens.

- 2-3 college students matched with older adults for virtual video visits ~1 hour/week for at least 16 weeks to develop meaningful relationships with the seniors.
- Mandatory training is provided to students in the program.
 - Best ways to interact with the older adults & additional regular support.
- Opportunities for additional volunteer hours are possible with other volunteering options such as assisting with social media, call support, outreach, etc.
 - Current volunteering roles are listed [here](#).

Contact: Jasmyn Gordon |
jasmyn.gordon@conversationstoremember.org



Who We Are

Conversations to Remember is a 501(c)(3) charity whose mission is to combat feelings of isolation and loneliness among senior citizens. We facilitate weekly video calls with senior citizens, including those with dementia, with the goal of creating intergenerational friendships.

How You Can Get Involved

Young adult college students will engage in virtual visits with a senior citizens. These seniors are lonely, and are excited to speak with you. Each video call will have 2-3 student volunteers matched with one senior. The calls will be for one hour, at the same time each week. You will only be matched for a call at a time when you are available. You must commit to continuing in the program for at least 4 months. *Conversations to Remember* will provide you with training and support.



SIGN UP HERE



email: info@ConversationstoRemember.org
telephone: 862-243-5331

LionCare Clinic School Supplies Drive

Providing Necessities for Under-Resourced Communities.

Drop Off: AED Office (HUB 207, 1 Service Pt Per Donation)

Middle and High School:

Notebooks	Pencils
Binders	Erasers
Pocket Folders	Highlighters
Pens	Pencil Cases
Calculators (4 Pt)	Backpacks (4 Pt)

Elementary School:

Notebooks	Construction Paper	Washable Markers
Pencils	Pencil Cases	Blunt-Tip Scissors
Erasers	Binders	Lunch Box
Folders	Colored Pencils	Backpacks (4 Pt)
Crayons	Glue Sticks	

Diversity in Healthcare Task Force (DHT)

Diversity in Healthcare Conference

- Hosted annually each spring semester
 - **Sunday, March 1, 2026**
- **Goal:** To educate pre-health students about healthcare disparities and how to ideate potential solutions
- **Established:** Founded by PSU AED in 2021
- **Unique:** Only school to host this type of student-run conference



Diversity in Healthcare Conference



Discussions (AED x MAPS)

- ~3 discussions per semester
- Group presentations on healthcare disparities followed by discussions

Conference

- 2 professional speakers, catered lunch, and a certificate from PSCOM

Solution Phase

- Student groups work with a BRIDGE mentor to prepare a solution proposal
- Groups will present ideas to a panel of professional judges

Implementation Phase

- Winners are awarded \$3,500 to implement their solution in Centre County during the following year

HOSPITAL/CLINIC NAME STATE COLLEGE, PA		DISCHARGE SUMMARY	
Patient Name: _____	Provider Name: _____		
Initial Date: _____	Discharge Date: _____		
OVERVIEW			
IMPORTANT RISK FACTORS			
MEDICATION			
Medication	Time	Purpose	Watch For
HEALTH OUTLOOK: _____		WHEN TO CALL YOUR DOCTOR	
● ● ●		☎ ①	
<input type="checkbox"/> I understand my care instructions			
<input type="checkbox"/> I have reviewed this information with my provider			



THON™

What is THON?

- THON™ is the world's largest student-run philanthropy
- Raised over 17 million dollars last year
- Culminates in a 46-hour dance marathon on February 20-22
- No pediatric cancer patient at Penn State Children's Hospital in Hershey pays a single cent for their treatment



Meet our THON Families

The **CLARA** Shepps Family



Puppy "Emmie"



Fam in DC!

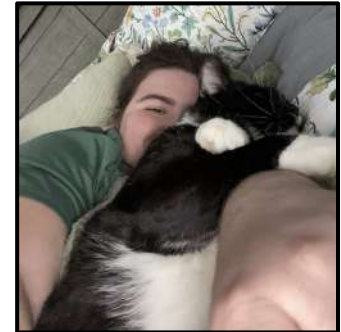
The **MARY** Torres Family



Cat "Dibs"



Crochet MASTER



25-26 THON Leadership Team



Justin Deekollu
Primary Chair



Logan Eisaman
Alternative
Fundraising Chair



Addison Firestone
Family Relations
Chair



**Isabella
Bautista-Santiago**
Strategic Planning
Chair



Siya Kakadia
Donor and Alumni
Relations Chair